

Floor Drains and Collecting Tanks
Floor Drain with Stainless Steel
Grate and Side Drain - Horizontal
outlet 400x1850 mm

ITEM # _____

MODEL # _____

NAME # _____

SIS # _____

AIA # _____



328059 (FDC40185)

Floor drainage channel with s/s grate, side drain - horizontal outlet, 400x1850

Short Form Specification

Item No. _____

Constructed in 304 AISI stainless steel. Collecting tank with side siphon and horizontal drain pipe. Anti-slip mesh grate.

Main Features

- Easy to install.
- Anti-odour syphon.
- Removable waste blocking filter.
- Rag bolt for floor fixing.
- Easy to inspect for any possible waste removal action.
- Electrochemical finishing gives grids a bright appearance.
- Ideal for any drain solution, particularly suggested for great amounts of water drained during cleaning operations.
- Collecting tanks with side siphon.

Construction

- Anti-slip mesh 25x25 mm grating, h=25 mm, 1.5 mm in thickness.
- Constructed entirely in 304 AISI stainless steel.
- Adjustable leveling feet.
- Collecting tanks available with horizontal drain pipe.

APPROVAL: _____

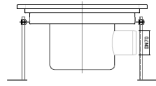


Floor Drains and Collecting Tanks Floor Drain with Stainless Steel Grate and Side Drain - Horizontal outlet 400x1850 mm

Front

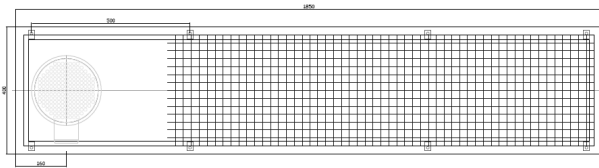


Side



D = Drain

Top



Key Information:

External dimensions, Width:	
328059 (FDC40185)	1850 mm
External dimensions, Depth:	400 mm
External dimensions, Height:	200 mm
Net weight:	30 kg



Floor Drains and Collecting Tanks
Floor Drain with Stainless Steel Grate and Side Drain - Horizontal outlet
400x1850 mm
The company reserves the right to make modifications to the products
without prior notice. All information correct at time of printing.